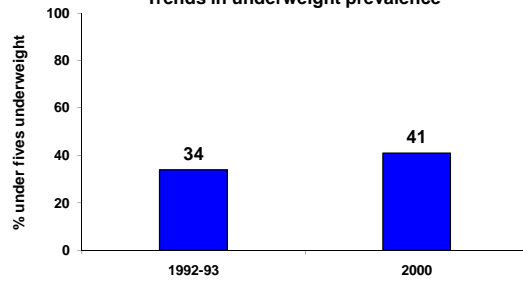


SUDAN

PROGRESS TOWARD THE MILLENNIUM DEVELOPMENT GOALS

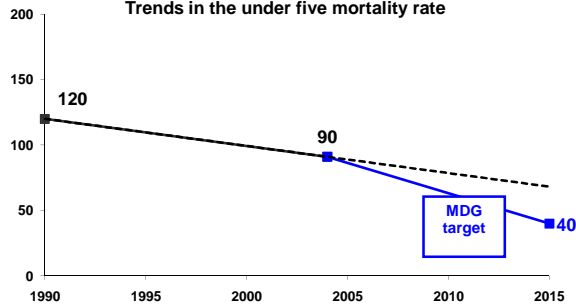
MDG 1: NUTRITION "NO CHANGE OR GETTING WORSE"

Trends in underweight prevalence



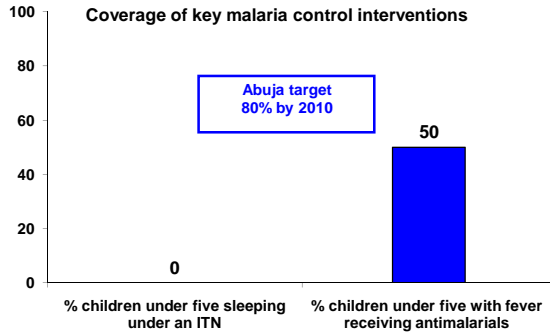
MDG 4: CHILD MORTALITY "NOT ON TRACK"

Trends in the under five mortality rate



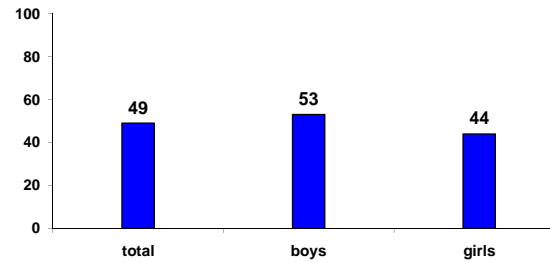
MDG 6: HIV/AIDS & MALARIA

Coverage of key malaria control interventions



MDG 2: EDUCATION "NOT ON TRACK"

Net enrolment ratio in primary school, 2001



MDG 5: MATERNAL MORTALITY "VERY HIGH"

Maternal Mortality Ratio (adjusted)

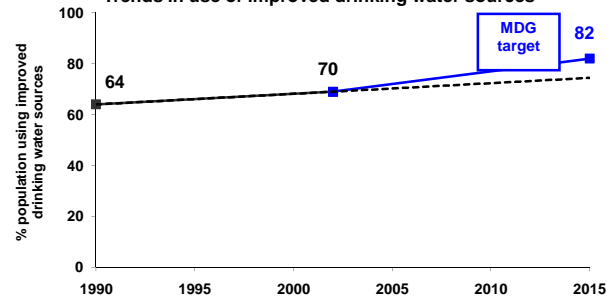
SUDAN	590
Developing World	440
Industrialized World	13
World	400

Lifetime risk of maternal death (1 in :)

SUDAN	30
Developing World	61
Industrialized World	4000
World	74

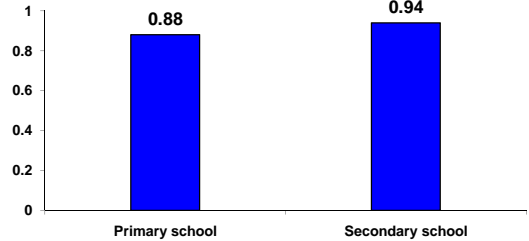
MDG 7: WATER & SANITATION "MAKING PROGRESS BUT INSUFFICIENT"

Trends in use of improved drinking water sources



MDG 3: GENDER EQUALITY "NOT ON TRACK"

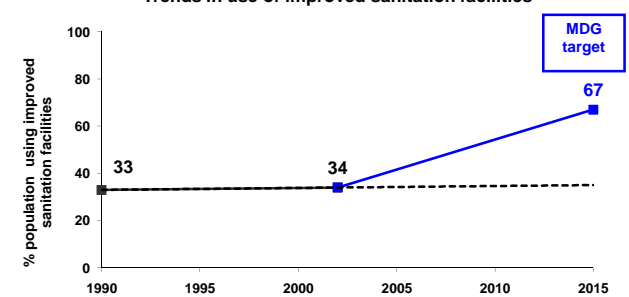
Gross enrolment ratio, gender parity index 2000-05



MDG 6: HIV/AIDS & MALARIA "NOT AVAILABLE"

MDG 7: WATER & SANITATION "NOT ON TRACK"

Trends in use of improved sanitation facilities



(See pages 2 & 3 for specific data sources)

SUDAN

PROGRESS TOWARD THE MILLENNIUM DEVELOPMENT GOALS

GOAL	TARGET	MEASURE OF TARGET	MEASURE OF TARGET		Target 2015	Actual AARC*	Required AARC*	SUMMARY	SOURCES
			1990	2005					
MDG 1	NUTRITION	Halve between 1990 and 2015 the proportion of people who suffer from hunger	% children under five who are underweight	34 (1992-93)	41 (2000)	NA	-2.4%	2.8%	NO CHANGE OR GETTING WORSE PAPCHILD 1992-93; MICS 2000 (Reanalyzed by UNICEF HQ); UNICEF Progress for Children May 2006
MDG 2	EDUCATION	Ensure that by 2015 children everywhere, boys and girls alike, will be able to complete a full course of primary schooling	Net enrolment ratio in primary school (total)**	48.9 (2001)	56.4	100	1.25%	3.19%	NOT ON TRACK UNICEF Progress for Children April 2005
			Net enrolment ratio in primary school (boys)**	53.3 (2001)	59.2	100	0.98%	2.92%	UNICEF Progress for Children April 2005
			Net enrolment ratio in primary school (girls)**	44.4 (2001)	53.6	100	1.53%	3.47%	UNICEF Progress for Children April 2005
MDG 3	GENDER EQUALITY	Eliminate gender disparity in primary and secondary education, preferably by 2005, and in all levels by 2015	Gross enrolment ratio in primary school, gender parity index	NA	0.88 (2000-05)	1.00	NA	NA	NOT ON TRACK (On track = GPI is between 0.96 and 1.04 inclusive) UNESCO estimates available in SOWC2007
			Gross enrolment ratio in secondary school, gender parity index	NA	0.94 (2000-05)	1.00	NA	NA	NOT ON TRACK (On track = GPI is between 0.96 and 1.04 inclusive) UNESCO estimates available in SOWC2007
MDG 4	CHILD MORTALITY	Reduce by two-thirds, between 1990 and 2015, the under five mortality rate	Under five mortality rate	120	90	40	1.9%	8.1%	NOT ON TRACK UNICEF/WHO/World Bank/ UNPD joint estimates
			SUDAN	DEVELOPING WORLD	INDUSTRIALIZED WORLD	WORLD			
MDG 5	MATERNAL MORTALITY	Reduce by three-quarters, between 1990 and 2015, the maternal mortality ratio	Maternal mortality ratio:	590 (2000)	440 (2000)	13 (2000)	400 (2000)	VERY HIGH (Latest estimate > 550)	UNICEF/WHO/UNFPA adjusted estimates of maternal mortality in "Maternal Mortality in 2000: Estimates Developed by WHO/UNICEF/UNFPA"
		Lifetime risk of maternal death (1 in :)	30 (2000)	61 (2000)	4000 (2000)	74 (2000)	VERY HIGH	UNICEF/WHO/UNFPA adjusted estimates of maternal mortality in "Maternal Mortality in 2000: Estimates Developed by WHO/UNICEF/UNFPA"	
			MEASURE OF TARGET	1990	2005	Target 2015	Actual AARC*	Required AARC*	
MDG 6	HIV/AIDS & MALARIA	Have halted and begun to reverse the spread of HIV/AIDS	HIV prevalence rate among young pregnant women aged 15-24 years (in capital city)	NA	NA	NA	NA	NA	Ministry of Health
		Have halted and begun to reverse the incidence of malaria and other major diseases	Incidence estimates not available (see page 3 for key malaria indicators for MDG monitoring)						
MDG 7	WATER & SANITATION	Halve by 2015 the proportion of people without sustainable access to safe drinking water and basic sanitation	% population using improved drinking water sources	64	70 (2004)	82	NA	NA	MAKING PROGRESS BUT INSUFFICIENT UNICEF/WHO Joint Monitoring Programme (JMP), and UNICEF Progress for Children September 2006
		Halve by 2015 the proportion of people without sustainable access to safe drinking water and basic sanitation	% population using improved sanitation facilities	33	34 (2004)	67	NA	NA	NOT ON TRACK UNICEF/WHO Joint Monitoring Programme (JMP), and UNICEF Progress for Children September 2006

* AARC = average annual rate of change

** In some countries the net attendance ratio in primary school is used instead.

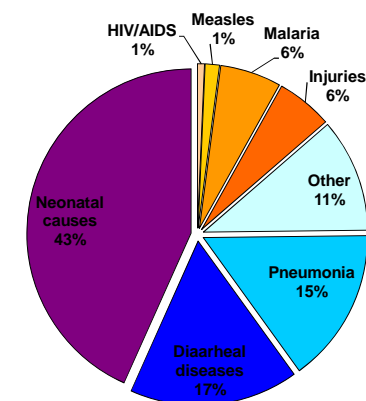
SUDAN

OTHER KEY INDICATORS OF CHILD WELL-BEING

AREA	SUB-AREA	KEY INDICATOR	YEAR & SOURCE	SUDAN ESTIMATE	MENA AVERAGE
NUTRITION	VITAMIN A SUPPLEMENTATION	Vitamin A supplementation coverage rate (6-59 months)	UNICEF HQ 2004	70	NA
	EXCLUSIVE BREASTFEEDING	% infants who are exclusively breastfed (first 6 months of life)	MICS 2000	16	30
	IODIZED SALT CONSUMPTION	% households consuming adequately iodized salt (15 parts per million or more)	MICS 2000 Reanalyzed by UNICEF HQ	1	65
	LOW BIRTH WEIGHT	% infants with low birth weight	Safe Motherhood Survey 1999	31	15
HEALTH	PNEUMONIA	% under fives with suspected pneumonia taken to an appropriate health care provider	MICS 2000 Reanalyzed by UNICEF HQ	57	66
	DIARRHEA	% under fives with diarrhea receiving ORT and continued feeding	MICS 2000 Reanalyzed by UNICEF HQ	38	39
	MALARIA	% under fives with fever receiving antimalarial drugs	MICS 2000	50	NA
		% under fives sleeping under an ITN	MICS 2000	0	NA
HIV/AIDS	PREVALENCE	Estimated adult HIV prevalence rate (15-49 years)	UNAIDS end-2005	1.6	0.2
	PMTCT	% HIV-positive pregnant women receiving ARVs to prevent infant HIV infection	NA	NA	NA
	KNOWLEDGE	% of young people who have comprehensive knowledge of HIV	NA	NA	NA
	CONDOM USE	% of young people who used a condom at last high-risk sex	NA	NA	NA
IMMUNIZATION	MEASLES	% one year old children immunized against measles	WHO & UNICEF 2005	60	89
	DPT3	% one year old children immunized with 3 doses of DPT	WHO & UNICEF 2005	59	89
MATERNAL & NEWBORN CARE	SKILLED ATTENDANT AT DELIVERY	% births attended by skilled health personnel (doctor, nurse, midwife)	Safe Motherhood Survey 1999	87	76
	ANTENATAL CARE	% women aged 15-49 years attended at least once during pregnancy by skilled health personnel (doctor, nurse or midwife)	MICS 2000	60	70
	CONTRACEPTIVE PREVALENCE	% women in union aged 15-49 currently using contraception	MICS 2000	7	53
CHILD PROTECTION	BIRTH REGISTRATION	% children under five that were registered at the moment of survey	MICS 2000	64	NA
	FEMALE GENITAL MUTILATION	% women 15-49 years of age who have been mutilated/cut	MICS 2000	90	NA
	CHILD LABOR	% children aged 5-14 years involved in labor activities at the moment of survey	MICS 2000	14	10
	CHILD MARRIAGE	% women 20-24 years of age that were married or in union before they were 18 years old	MICS 2000	27	NA

DEMOGRAPHY (2005)			
Total population	36,233,000	Total under five population	5,216,000
Under five mortality rate	90	Under five mortality rank	49
Total births	1,166,000	Total under five deaths	105,000

CAUSES OF UNDER FIVE DEATHS, MENA REGION (2004)



Source: UNICEF, The State of the World's Children 2007; www.childinfo.org