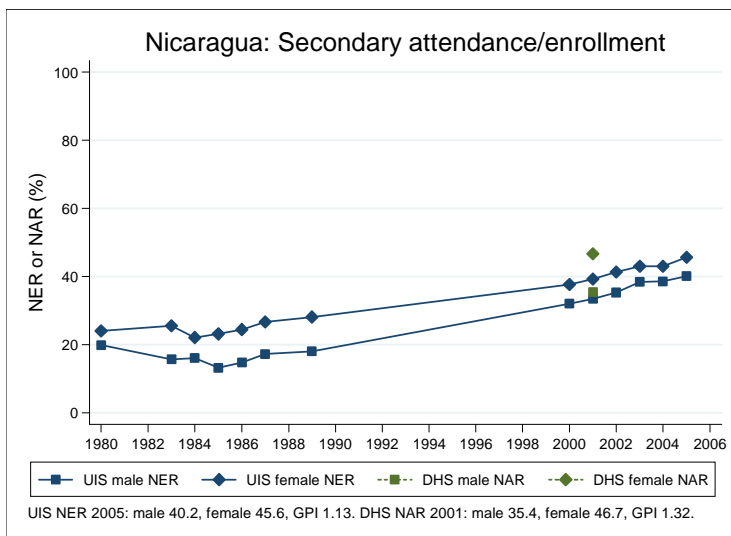
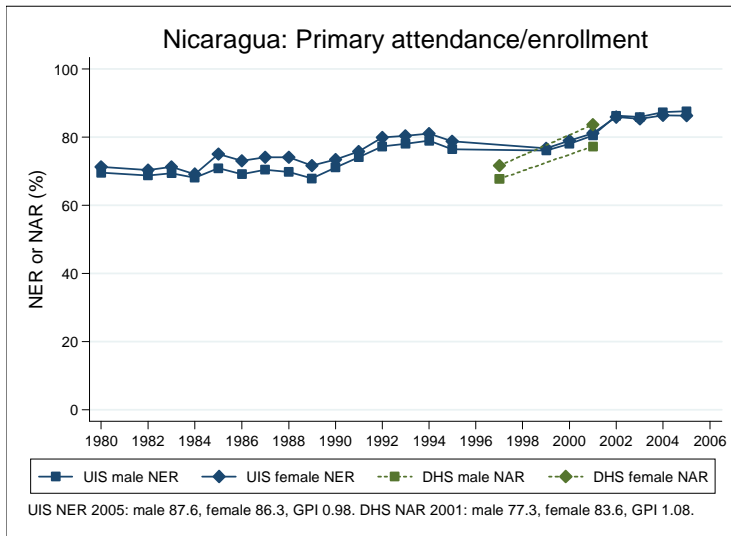
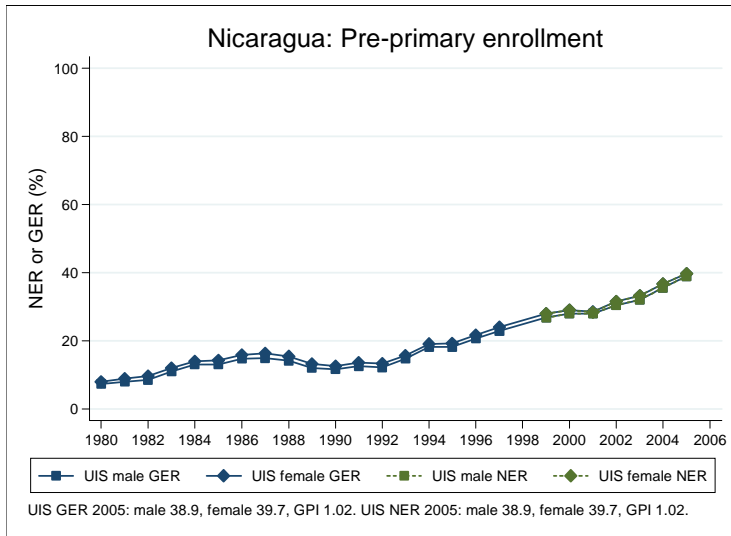
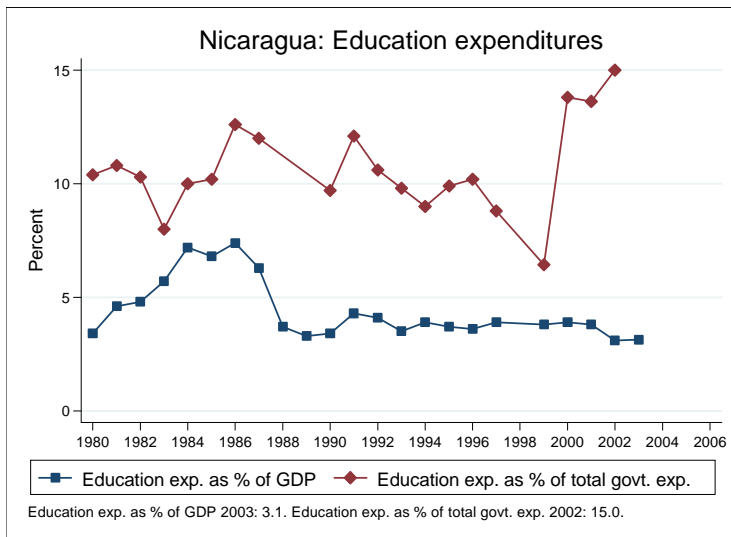
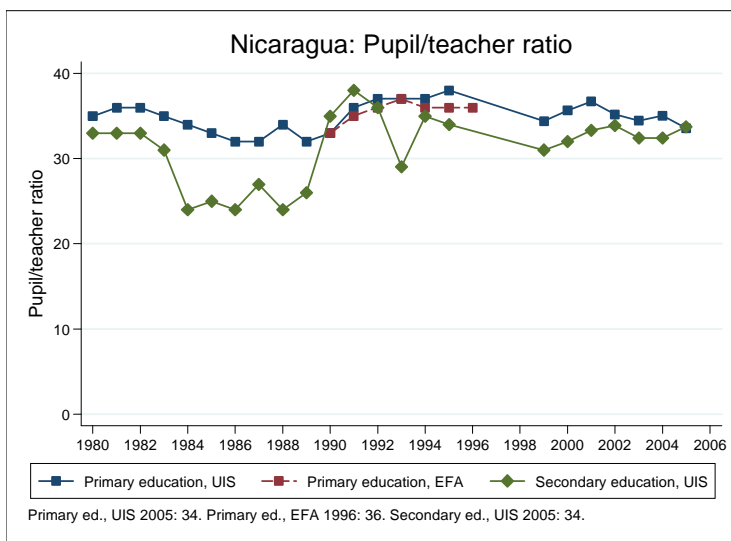
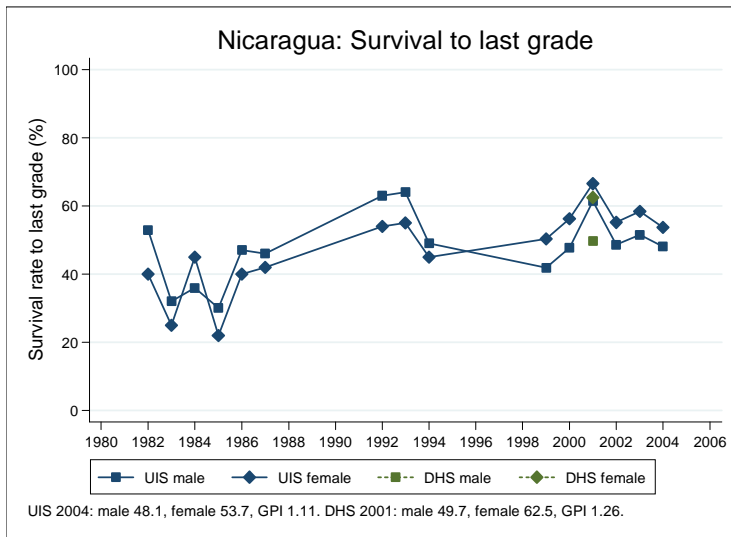


Education statistics: Nicaragua

UNICEF, Division of Policy and Practice, Statistics and Monitoring Section, www.childinfo.org, May 2008





Administrative data: UNESCO Institute for Statistics

Nicaragua

Population (1,000)	Total	Male	Female
Preschool age, 2006	537	274	263
Primary school age, 2006	841	428	412
Secondary school age, 2006	664	335	329
Total population, all ages, 2007	5603	2790	2813
Official school age (years)	Entrance age	Graduation age	Duration
Preschool, 2005	3	6	4
Primary school, 2005	7	12	6
Secondary school, 2005	13	17	5
Compulsory education, 2005	7	12	6
Net enrolment ratio (%)	Total	Male	Female
Preschool NER, 2005	39.3	38.9	39.7
Primary school NER, 2005	87.0	87.6	86.3
Secondary school NER, 2005	42.8	40.2	45.6
Gross enrolment ratio (%)	Total	Male	Female
Preschool GER, 2005	39.3	38.9	39.7
Primary school GER, 2005	111.6	113.0	110.1
Secondary school GER, 2005	66.5	62.4	70.7
Entrance and transition (%)	Total	Male	Female
Primary net intake rate, 2005	39.5	40.8	38.2
Primary gross intake rate, 2005	147.2	151.6	142.5
Primary entrants with ECCE, 2005	45.1	44.9	45.3
Transition rate primary-secondary, 1999	99.2	100.0	98.3
Repetition and completion	Total	Male	Female
Primary repetition rate (%), 2005	9.9	11.1	8.6
Secondary repetition rate (%), 2005	6.0	7.3	4.7
Survival rate to grade 5 (%), 2004	53.5	50.9	56.4
Survival rate to last primary grade (%), 2004	50.8	48.1	53.7
Primary completion rate (%), 2005	73.7	70.6	77.0
School life expectancy (years), 2005	10.1	10.0	10.2
Teaching staff	Pupil/teacher ratio	% trained teachers	% female teachers
Preschool, 2005	25.3	33.0	95.8
Primary school, 2005	33.6	76.9	78.5
Secondary school, 2005	33.7	52.5	56.8
Public expenditure per student as % of GDP per capita			
Primary school, 2004	8.4		
Secondary school, 2004	9.9		
Total public expenditure on education			
As % of GDP, 2003	3.1		
As % of total government expenditure, 2002	15.0		

Data sources:

Population: United Nations Population Division, *World Population Prospects: The 2006 Revision*, March 2007.

Education: UNESCO Institute for Statistics, Data Centre, <http://stats.uis.unesco.org/unesco/ReportFolders/ReportFolders.aspx>, January 2008.

Survey data: Nicaragua 2001 DHS

Nicaragua

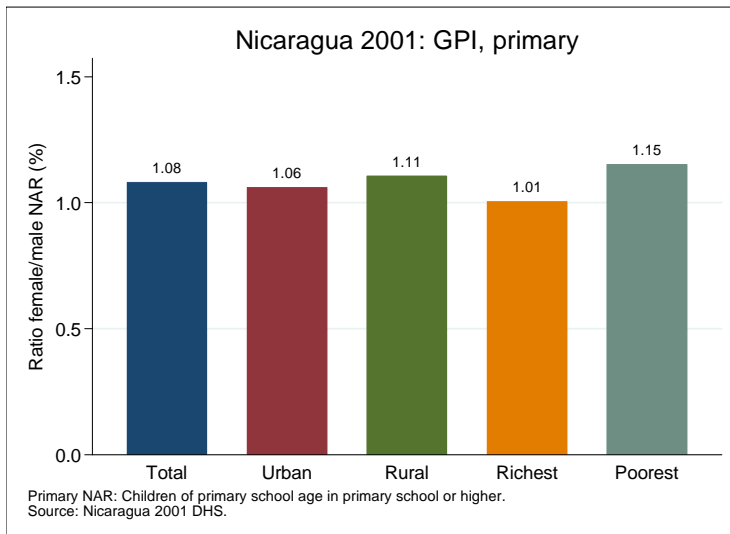
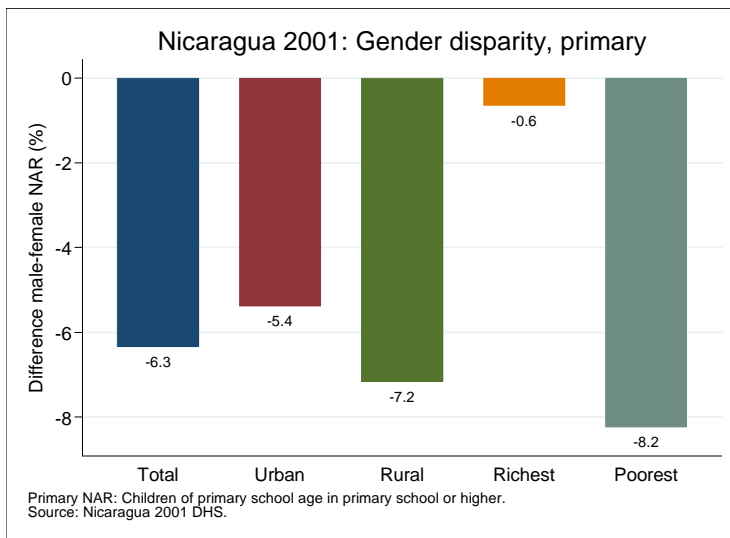
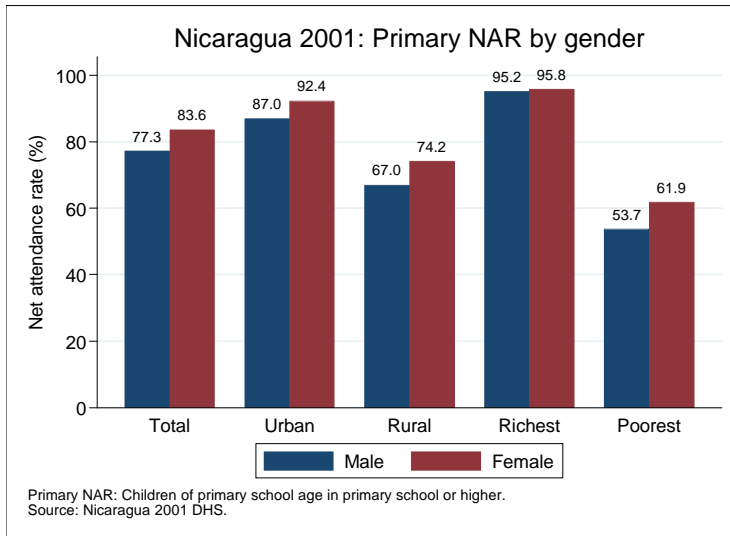
Net attendance rate (%)	Total	Male	Female	Urban	Rural	Richest	Poorest
Primary school NAR	80.4	77.3	83.6	89.6	70.5	95.5	57.7
Secondary school NAR	40.9	35.4	46.7	57.9	19.1	80.9	6.1
Gross attendance rate (%)	Total	Male	Female	Urban	Rural	Richest	Poorest
Primary school GAR	101.9	99.2	104.6	108.2	95.1	105.1	79.6
Secondary school GAR	58.7	51.0	66.7	82.4	28.2	112.8	8.4
Primary age in school (%)	Total	Male	Female	Urban	Rural	Richest	Poorest
Primary school	77.1	74.5	79.8	84.4	69.3	85.4	57.6
Secondary school	3.3	2.8	3.8	5.2	1.2	10.1	0.1
Preschool	1.1	1.4	0.8	0.8	1.4	0.9	1.5
Non-formal education							
Secondary age in school (%)	Total	Male	Female	Urban	Rural	Richest	Poorest
Secondary school	39.8	34.7	45.0	56.0	18.9	76.4	6.1
Higher education	1.2	0.7	1.7	1.9	0.2	4.5	0.0
Primary school	21.1	22.8	19.2	16.1	27.4	6.3	29.1
Preschool	0.0	0.1	0.0	0.0	0.0	0.0	0.1
Non-formal education							
Entrance and transition (%)	Total	Male	Female	Urban	Rural	Richest	Poorest
Primary net intake rate	36.0	34.7	37.5	35.0	36.9	21.5	32.7
Primary gross intake rate	108.3	103.5	113.7	104.1	112.3	97.5	99.6
Primary entrants with ECCE	73.9	73.1	74.7	87.0	62.6	92.4	51.6
Transition rate prim.-sec.	78.4	76.2	80.3	83.3	66.6	88.7	44.7
Repetition and completion (%)	Total	Male	Female	Urban	Rural	Richest	Poorest
Primary repetition rate	4.9	5.6	4.2	3.6	6.7	2.7	9.1
Primary dropout rate	11.8	13.7	9.9	8.9	15.8	4.0	20.0
Secondary repetition rate	2.4	2.5	2.2	2.5	1.6	2.4	2.5
Secondary dropout rate	20.4	22.0	19.1	19.7	23.4	16.8	29.7
Survival rate to grade 5	62.9	56.1	70.6	72.9	51.9	91.1	40.3
Survival rate to last prim. grade	55.8	49.7	62.5	66.7	43.1	89.3	30.6

Primary school NAR: children of primary school age in primary school or higher.

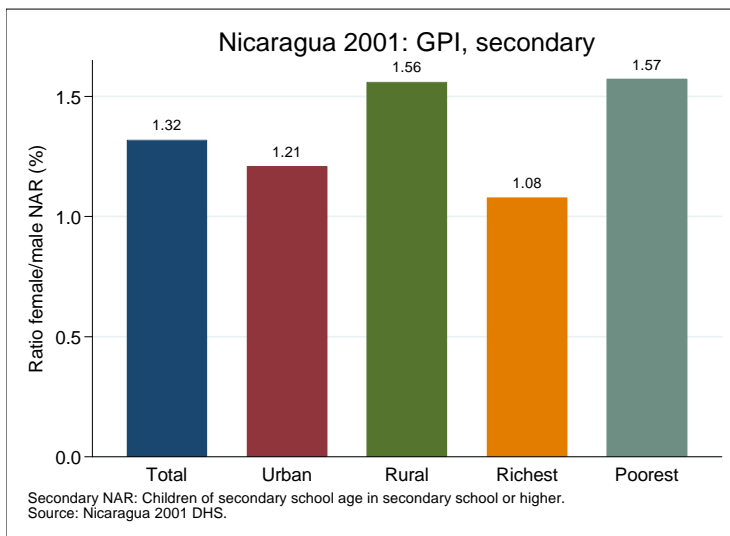
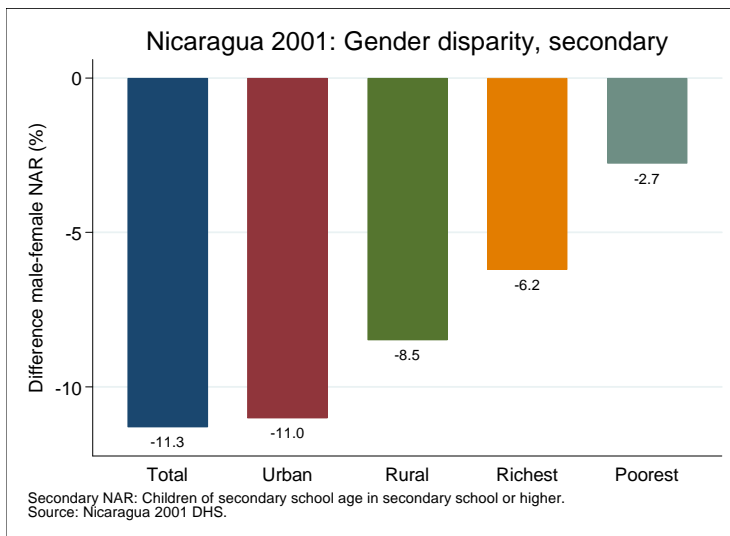
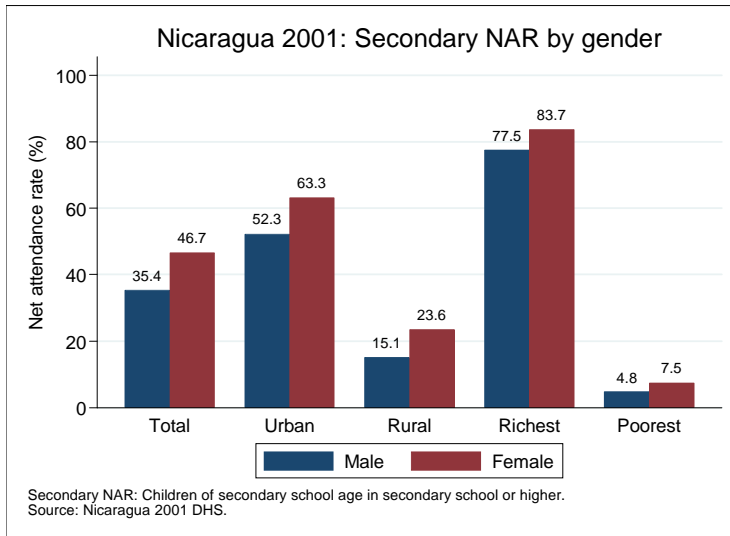
Secondary school NAR: children of secondary school age in secondary school or higher.

Data source: Nicaragua 2001 DHS.

Gender disparity in primary school (survey data)



Gender disparity in secondary school (survey data)



Projections to 2015

