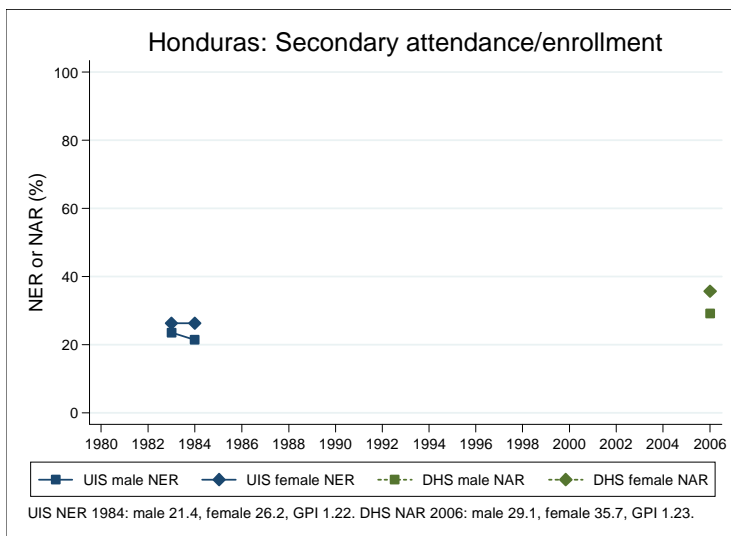
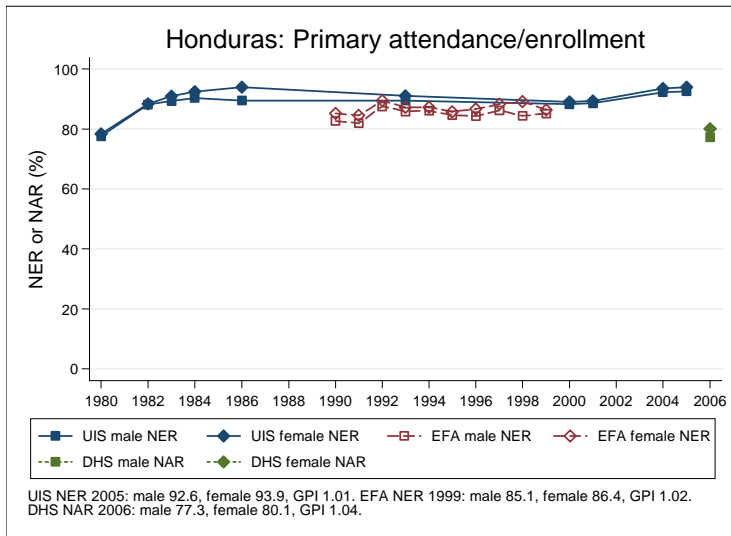
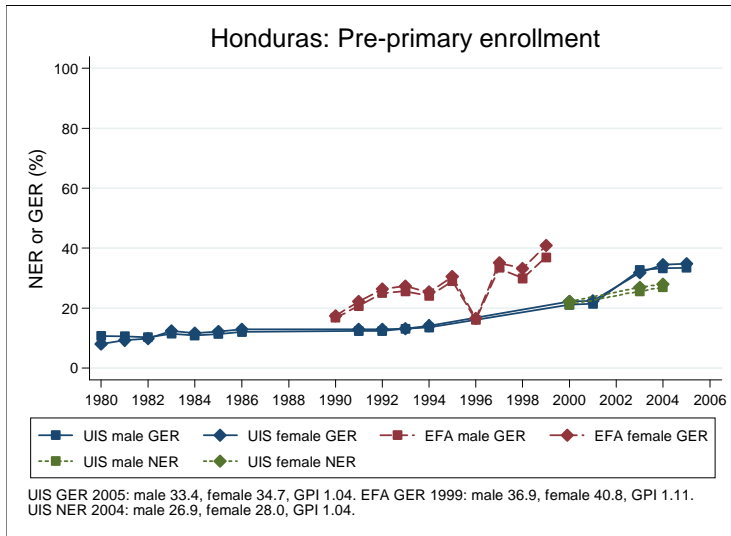
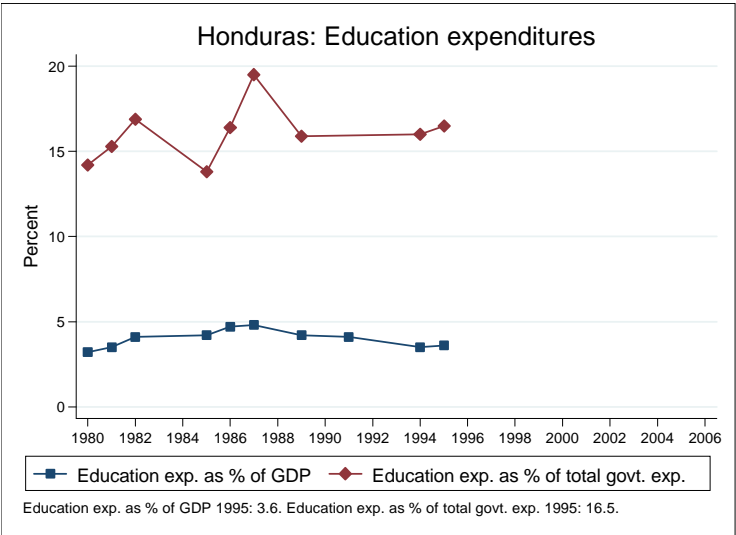
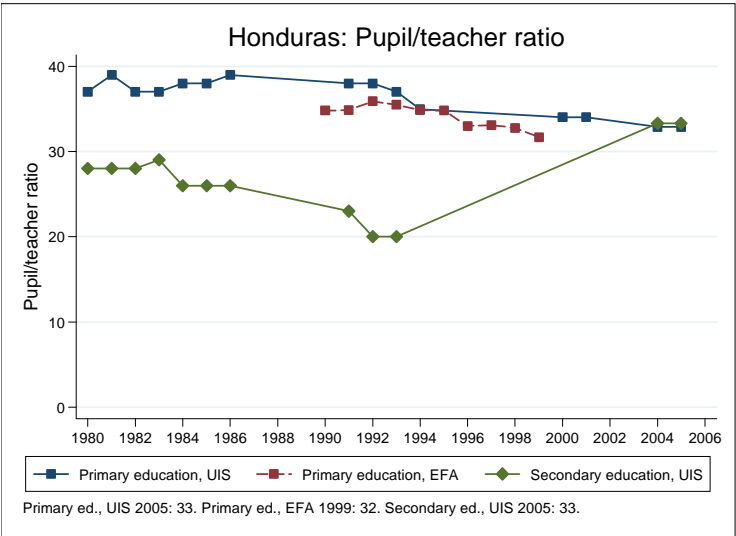
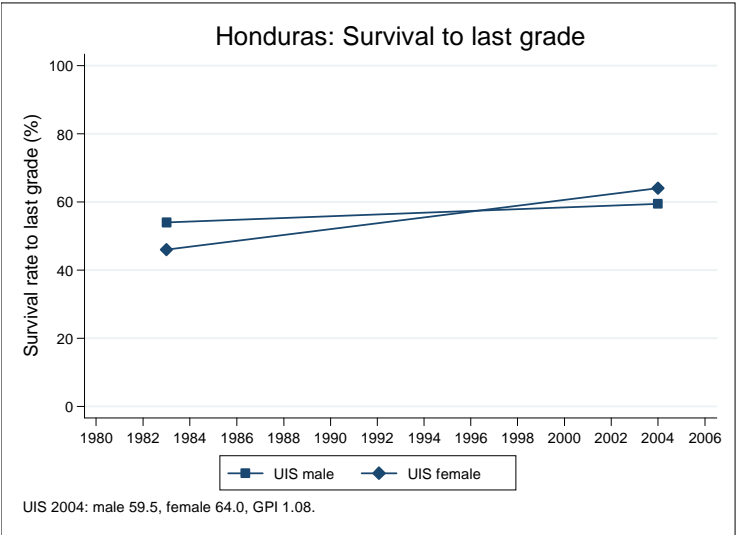


## Education statistics: Honduras

UNICEF, Division of Policy and Practice, Statistics and Monitoring Section, www.childinfo.org, May 2008





## Administrative data: UNESCO Institute for Statistics

### Honduras

<b>Population (1,000)</b>	<b>Total</b>	<b>Male</b>	<b>Female</b>
Preschool age, 2006	558	284	274
Primary school age, 2006	1094	556	538
Secondary school age, 2006	854	431	423
Total population, all ages, 2007	7106	3529	3577
<b>Official school age (years)</b>	<b>Entrance age</b>	<b>Graduation age</b>	<b>Duration</b>
Preschool, 2005	3	5	3
Primary school, 2005	6	11	6
Secondary school, 2005	12	16	5
Compulsory education, 2005	6	11	6
<b>Net enrolment ratio (%)</b>	<b>Total</b>	<b>Male</b>	<b>Female</b>
Preschool NER, 2004	27.5	26.9	28.0
Primary school NER, 2005	93.2	92.6	93.9
Secondary school NER, 1991	20.6		
<b>Gross enrolment ratio (%)</b>	<b>Total</b>	<b>Male</b>	<b>Female</b>
Preschool GER, 2005	34.1	33.4	34.7
Primary school GER, 2005	116.3	116.8	115.7
Secondary school GER, 2005	67.3	60.6	74.0
<b>Entrance and transition (%)</b>	<b>Total</b>	<b>Male</b>	<b>Female</b>
Primary net intake rate, 2004	62.0	61.1	62.9
Primary gross intake rate, 2005	132.9	134.1	131.7
Primary entrants with ECCE			
Transition rate primary-secondary			
<b>Repetition and completion</b>	<b>Total</b>	<b>Male</b>	<b>Female</b>
Primary repetition rate (%), 2005	8.5	9.4	7.5
Secondary repetition rate (%)			
Survival rate to grade 5 (%), 2004	70.0	67.3	72.9
Survival rate to last primary grade (%), 2004	61.7	59.5	64.0
Primary completion rate (%), 2005	80.8	78.9	82.8
School life expectancy (years), 2005	10.5	10.2	10.8
<b>Teaching staff</b>	<b>Pupil/teacher ratio</b>	<b>% trained teachers</b>	<b>% female teachers</b>
Preschool, 2005	19.6	63.9	94.3
Primary school, 2005	32.9	87.2	74.7
Secondary school, 2005	33.3	64.4	54.7
<b>Public expenditure per student as % of GDP per capita</b>			
Primary school			
Secondary school			
<b>Total public expenditure on education</b>			
As % of GDP, 1991	3.8		
As % of total government expenditure			

#### Data sources:

Population: United Nations Population Division, *World Population Prospects: The 2006 Revision*, March 2007.

Education: UNESCO Institute for Statistics, Data Centre, <http://stats.uis.unesco.org/unesco/ReportFolders/ReportFolders.aspx>, January 2008.