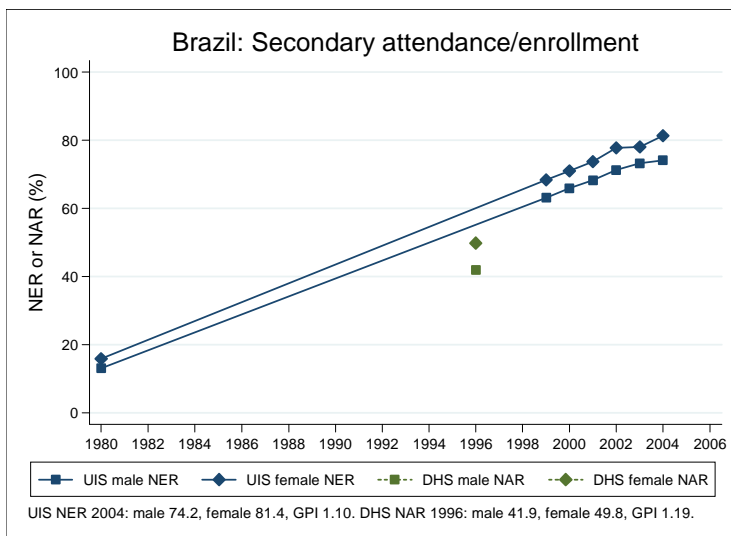
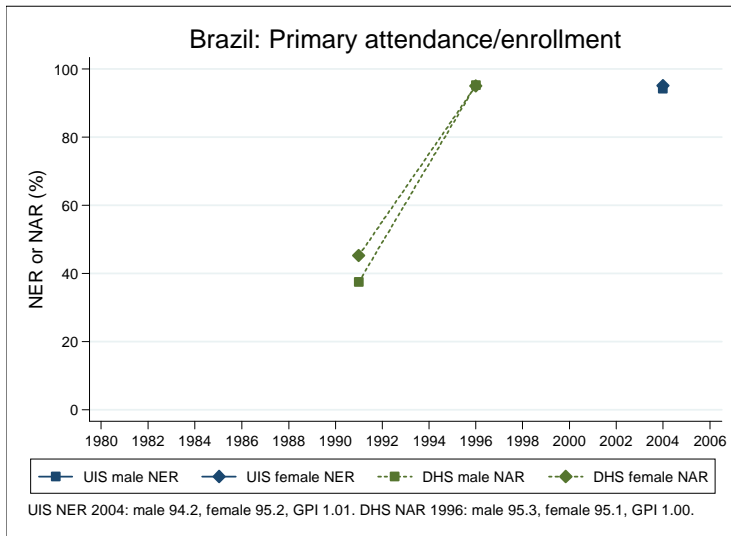
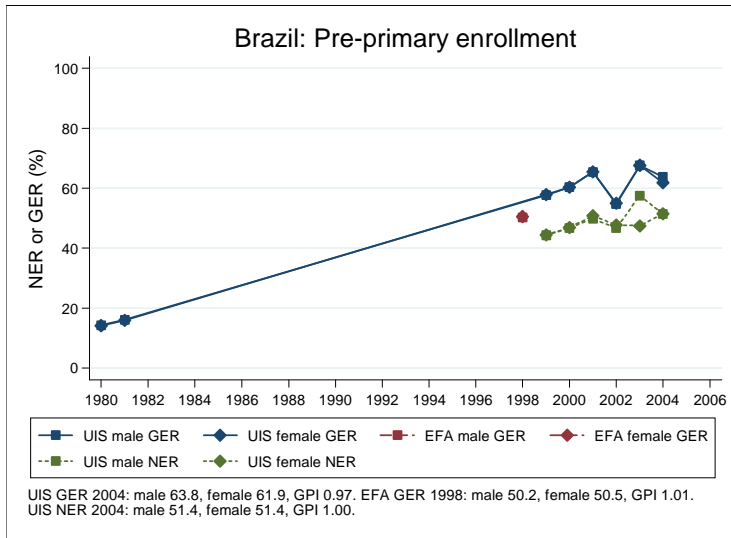
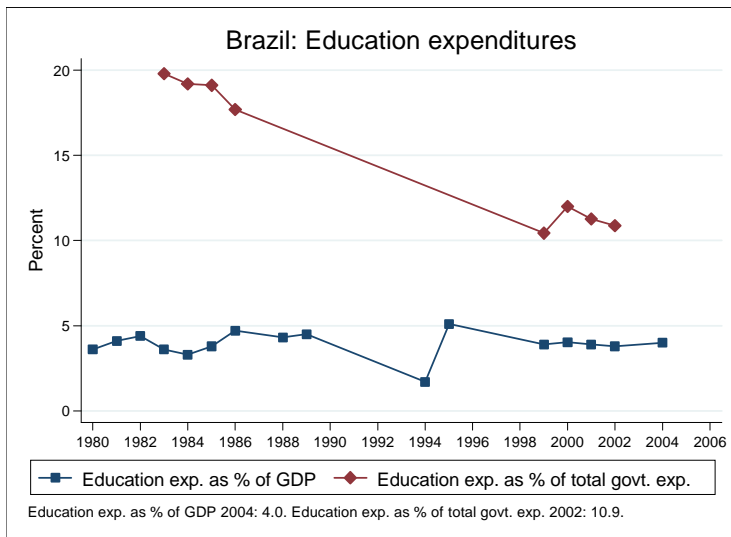
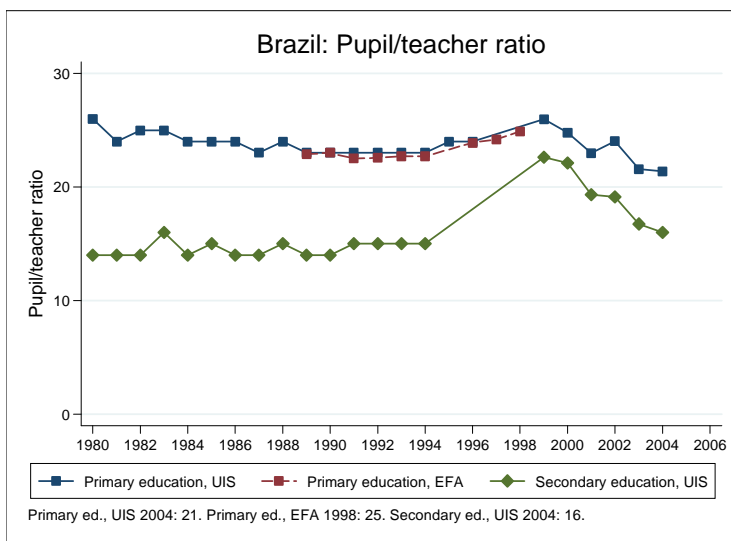
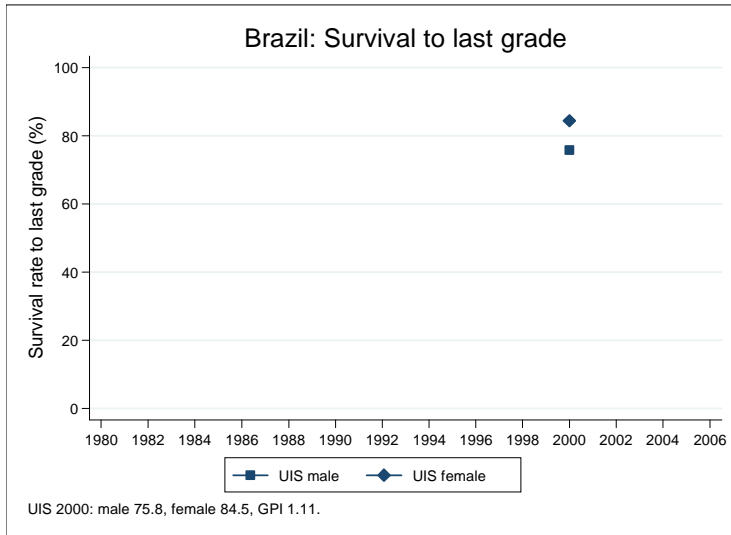


## Education statistics: Brazil

UNICEF, Division of Policy and Practice, Statistics and Monitoring Section, www.childinfo.org, May 2008





## Administrative data: UNESCO Institute for Statistics

### Brazil

<b>Population (1,000)</b>	<b>Total</b>	<b>Male</b>	<b>Female</b>
Preschool age, 2006	10735	5472	5264
Primary school age, 2006	13752	7002	6750
Secondary school age, 2006	23439	11904	11535
Total population, all ages, 2007	191791	94571	97220
<b>Official school age (years)</b>	<b>Entrance age</b>	<b>Graduation age</b>	<b>Duration</b>
Preschool, 2005	4	6	3
Primary school, 2005	7	10	4
Secondary school, 2005	11	17	7
Compulsory education, 2005	7	14	8
<b>Net enrolment ratio (%)</b>	<b>Total</b>	<b>Male</b>	<b>Female</b>
Preschool NER, 2004	51.4	51.4	51.4
Primary school NER, 2004	94.7	94.2	95.2
Secondary school NER, 2004	77.7	74.2	81.4
<b>Gross enrolment ratio (%)</b>	<b>Total</b>	<b>Male</b>	<b>Female</b>
Preschool GER, 2004	62.8	63.8	61.9
Primary school GER, 2004	140.3	145.6	134.8
Secondary school GER, 2004	105.7	100.8	110.6
<b>Entrance and transition (%)</b>	<b>Total</b>	<b>Male</b>	<b>Female</b>
Primary net intake rate			
Primary gross intake rate, 2004	101.3	105.7	96.6
Primary entrants with ECCE			
Transition rate primary-secondary, 2003	80.5		
<b>Repetition and completion</b>	<b>Total</b>	<b>Male</b>	<b>Female</b>
Primary repetition rate (%), 2004	20.1	20.1	20.1
Secondary repetition rate (%), 2004	21.9	18.3	18.3
Survival rate to grade 5 (%), 1991	72.7		
Survival rate to last primary grade (%), 2003	80.5	75.8	84.5
Primary completion rate (%), 2004	105.1	109.8	111.2
School life expectancy (years), 2004	12.9	12.8	13.1
<b>Teaching staff</b>	<b>Pupil/teacher ratio</b>	<b>% trained teachers</b>	<b>% female teachers</b>
Preschool, 2004	17.9		97.6
Primary school, 2004	21.4		89.6
Secondary school, 2004	16.0		80.0
<b>Public expenditure per student as % of GDP per capita</b>			
Primary school, 2004	12.8		
Secondary school, 2004	11.5		
<b>Total public expenditure on education</b>			
As % of GDP, 2004	4.0		
As % of total government expenditure, 2002	10.9		

#### Data sources:

*Population:* United Nations Population Division, *World Population Prospects: The 2006 Revision*, March 2007.

*Education:* UNESCO Institute for Statistics, Data Centre, <http://stats.uis.unesco.org/unesco/ReportFolders/ReportFolders.aspx>, January 2008.