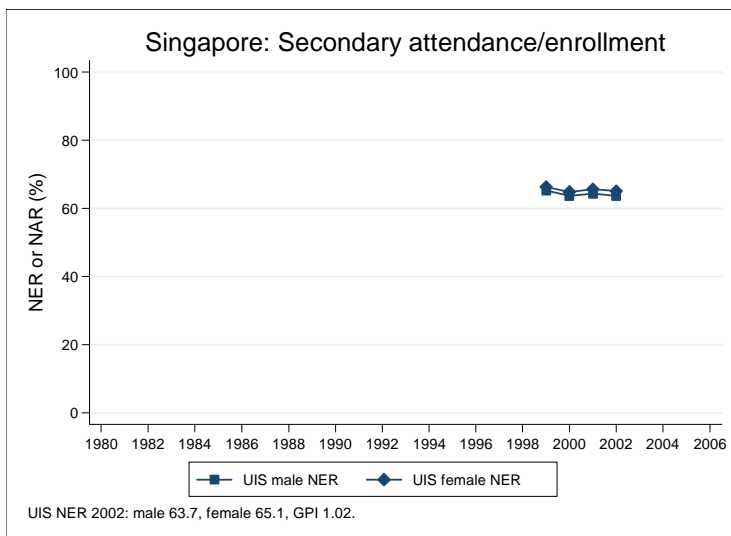
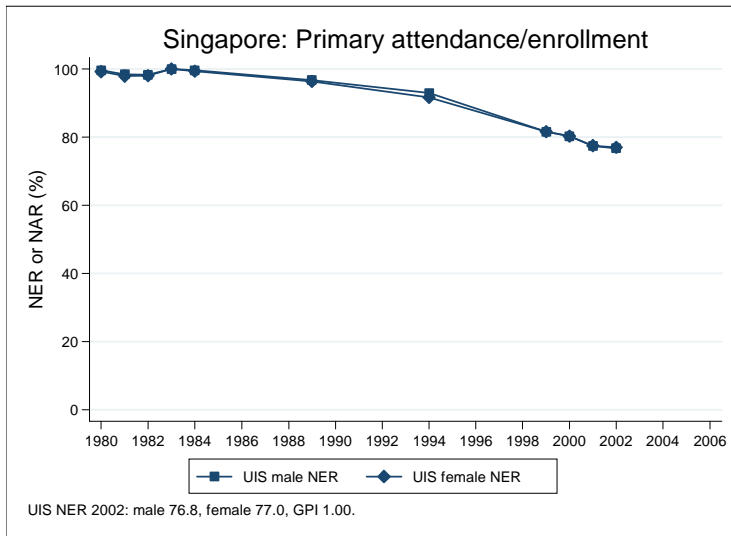
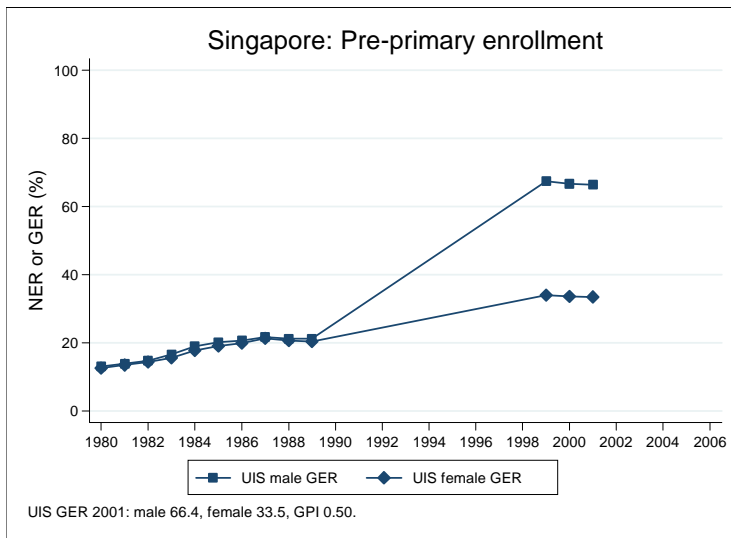
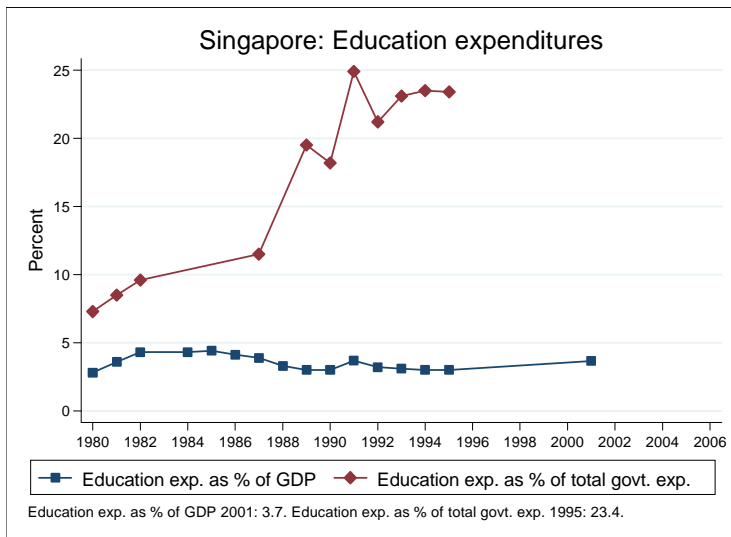
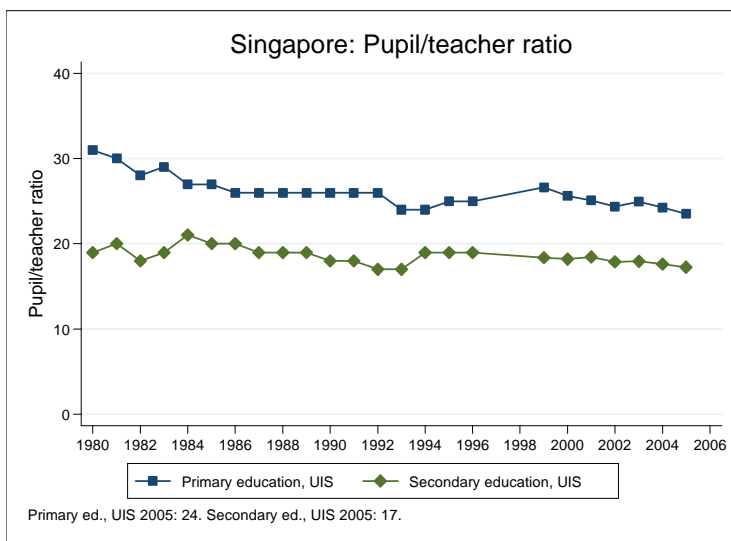
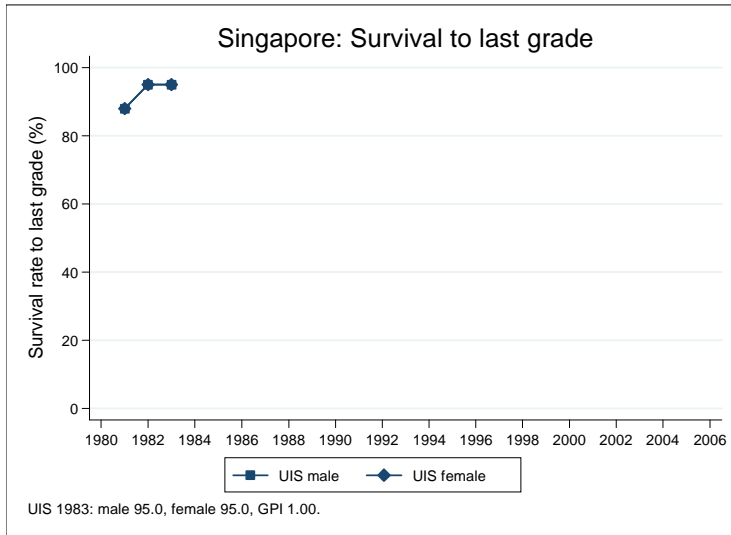


Education statistics: Singapore

UNICEF, Division of Policy and Practice, Statistics and Monitoring Section, www.childinfo.org, May 2008





Administrative data: UNESCO Institute for Statistics

Singapore

Population (1,000)	Total	Male	Female
Preschool age, 2006	136	70	65
Primary school age, 2006	361	187	174
Secondary school age, 2006	394	204	190
Total population, all ages, 2007	4436	2232	2204
Official school age (years)	Entrance age	Graduation age	Duration
Preschool, 2005	3	5	3
Primary school, 2005	6	11	6
Secondary school, 2005	12	17	6
Compulsory education, 2005	6	16	11
Net enrolment ratio (%)	Total	Male	Female
Preschool NER			
Primary school NER, 2002	76.9	76.8	77.0
Secondary school NER, 2002	64.4	63.7	65.1
Gross enrolment ratio (%)	Total	Male	Female
Preschool GER, 2001	50.5	66.4	33.5
Primary school GER, 2005	77.9	78.0	77.8
Secondary school GER, 2005	63.2	62.4	64.0
Entrance and transition (%)	Total	Male	Female
Primary net intake rate			
Primary gross intake rate, 1991	92.0	93.1	90.8
Primary entrants with ECCE			
Transition rate primary-secondary			
Repetition and completion	Total	Male	Female
Primary repetition rate (%)			
Secondary repetition rate (%)			
Survival rate to grade 5 (%)			
Survival rate to last primary grade (%)			
Primary completion rate (%)			
School life expectancy (years), 2005	8.3	8.3	8.4
Teaching staff	Pupil/teacher ratio	% trained teachers	% female teachers
Preschool			
Primary school, 2005	23.5		83.0
Secondary school, 2005	17.2		65.1
Public expenditure per student as % of GDP per capita			
Primary school, 2001	11.3		
Secondary school, 2001	17.9		
Total public expenditure on education			
As % of GDP, 2001	3.7		
As % of total government expenditure, 1991	18.2		

Data sources:

Population: United Nations Population Division, *World Population Prospects: The 2006 Revision*, March 2007.

Education: UNESCO Institute for Statistics, Data Centre, <http://stats.uis.unesco.org/unesco/ReportFolders/ReportFolders.aspx>, January 2008.