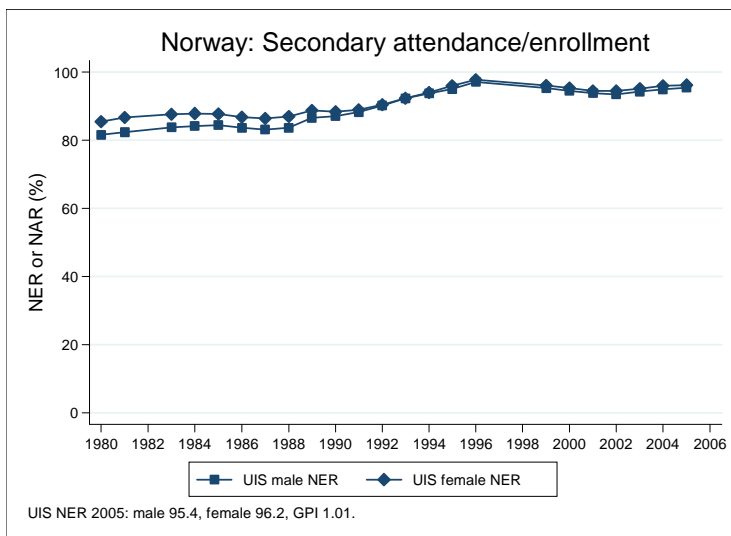
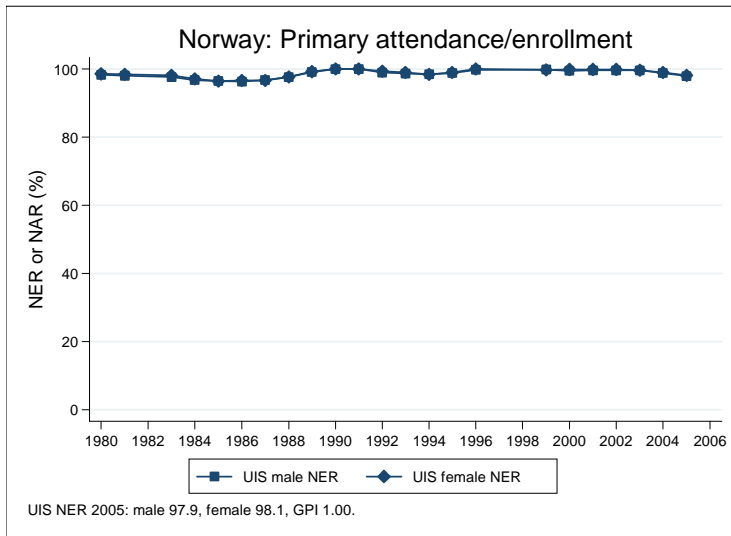
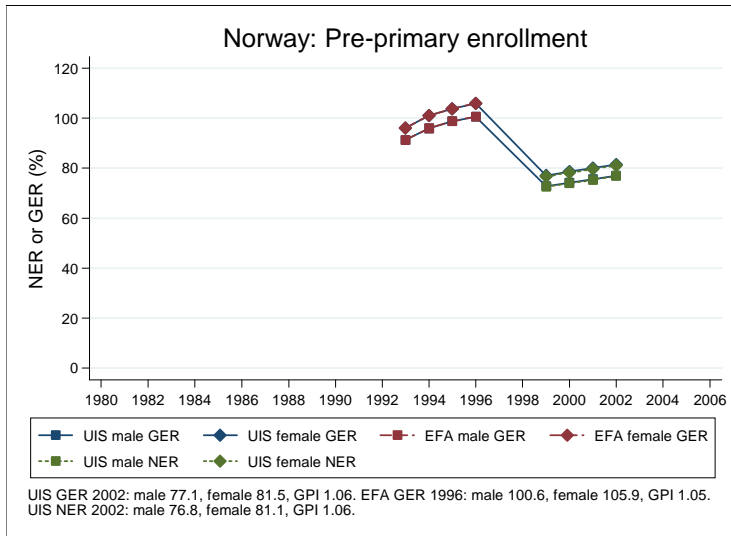
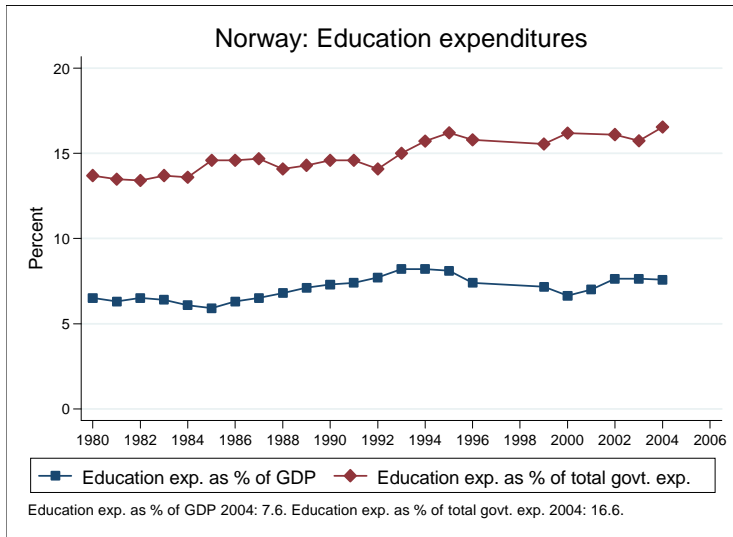
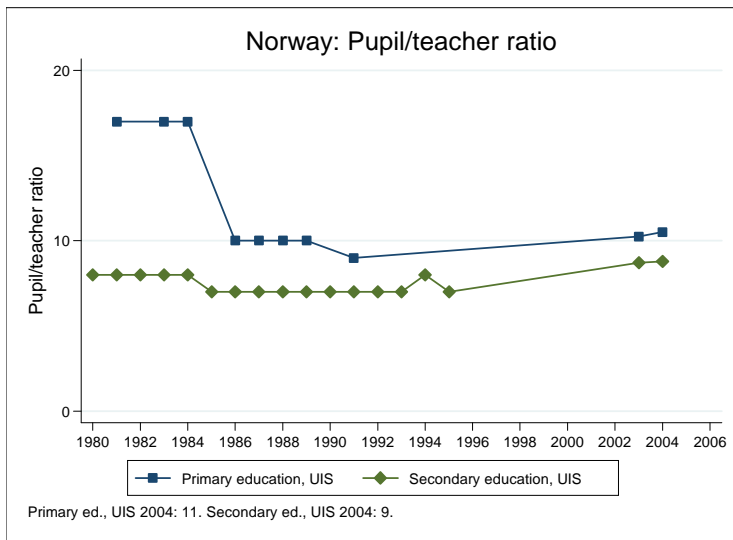
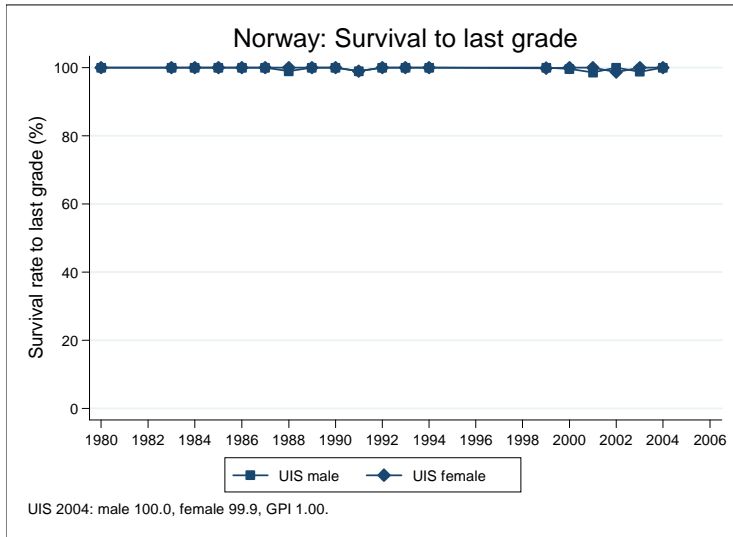


## Education statistics: Norway

UNICEF, Division of Policy and Practice, Statistics and Monitoring Section, www.childinfo.org, May 2008





## Administrative data: UNESCO Institute for Statistics

### Norway

| <b>Population (1,000)</b>                                    | <b>Total</b>               | <b>Male</b>               | <b>Female</b>            |
|--|----------------------------|---------------------------|--------------------------|
| Preschool age, 2006  | 176                        | 90                        | 86                       |
| Primary school age, 2006                                     | 438                        | 225                       | 213                      |
| Secondary school age, 2006                                   | 365                        | 187                       | 178                      |
| Total population, all ages, 2007                             | 4698                       | 2334                      | 2365                     |
| <b>Official school age (years)</b>                           | <b>Entrance age</b>        | <b>Graduation age</b>     | <b>Duration</b>          |
| Preschool, 2005  | 3                          | 5                         | 3                        |
| Primary school, 2005   | 6                          | 12                        | 7                        |
| Secondary school, 2005                                       | 13                         | 18                        | 6                        |
| Compulsory education, 2005                                   | 6                          | 16                        | 11                       |
| <b>Net enrolment ratio (%)</b>                               | <b>Total</b>               | <b>Male</b>               | <b>Female</b>            |
| Preschool NER, 2005  | 87.7                       | 76.8                      | 81.1                     |
| Primary school NER, 2005                                     | 98.0                       | 97.9                      | 98.1                     |
| Secondary school NER, 2005                                   | 95.8                       | 95.4                      | 96.2                     |
| <b>Gross enrolment ratio (%)</b>                             | <b>Total</b>               | <b>Male</b>               | <b>Female</b>            |
| Preschool GER, 2005  | 88.0                       | 77.1                      | 81.5                     |
| Primary school GER, 2005                                     | 98.0                       | 97.9                      | 98.1                     |
| Secondary school GER, 2005                                   | 112.6                      | 112.2                     | 113.2                    |
| <b>Entrance and transition (%)</b>                           | <b>Total</b>               | <b>Male</b>               | <b>Female</b>            |
| Primary net intake rate                                      |                            |                           |                          |
| Primary gross intake rate, 2005                              | 96.9                       | 96.5                      | 97.3                     |
| Primary entrants with ECCE                                   |                            |                           |                          |
| Transition rate primary-secondary, 2004                      | 99.9                       | 99.9                      | 99.8                     |
| <b>Repetition and completion</b>                             | <b>Total</b>               | <b>Male</b>               | <b>Female</b>            |
| Primary repetition rate (%)                                  |                            |                           |                          |
| Secondary repetition rate (%)                                |                            |                           |                          |
| Survival rate to grade 5 (%), 2004                           | 100.0                      | 100.0                     | 100.0                    |
| Survival rate to last primary grade (%), 2004                | 100.0                      | 100.0                     | 99.9                     |
| Primary completion rate (%), 2005                            | 98.5                       | 98.9                      | 98.1                     |
| School life expectancy (years), 2005                         | 13.7                       | 13.7                      | 13.7                     |
| <b>Teaching staff</b>  | <b>Pupil/teacher ratio</b> | <b>% trained teachers</b> | <b>% female teachers</b> |
| Preschool, 1991  | 3.9                        |                           | 95.2                     |
| Primary school, 2004   | 10.5                       |                           | 72.6                     |
| Secondary school, 2004                                       | 8.8                        |                           | 57.9                     |
| <b>Public expenditure per student as % of GDP per capita</b> |                            |                           |                          |
| Primary school, 2004   | 20.3                       |                           |                          |
| Secondary school, 2004                                       | 30.5                       |                           |                          |
| <b>Total public expenditure on education</b>                 |                            |                           |                          |
| As % of GDP, 2004  | 7.6                        |                           |                          |
| As % of total government expenditure, 2004                   | 16.6                       |                           |                          |

#### Data sources:

*Population:* United Nations Population Division, *World Population Prospects: The 2006 Revision*, March 2007.

*Education:* UNESCO Institute for Statistics, Data Centre, <http://stats.uis.unesco.org/unesco/ReportFolders/ReportFolders.aspx>, January 2008.