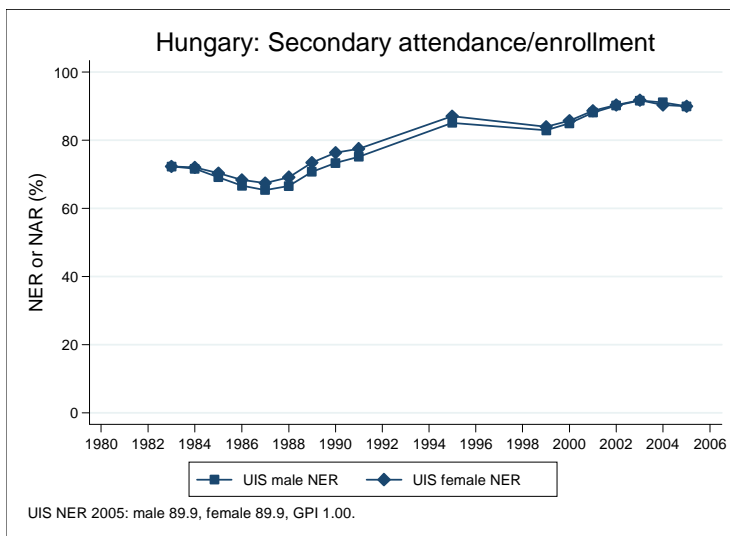
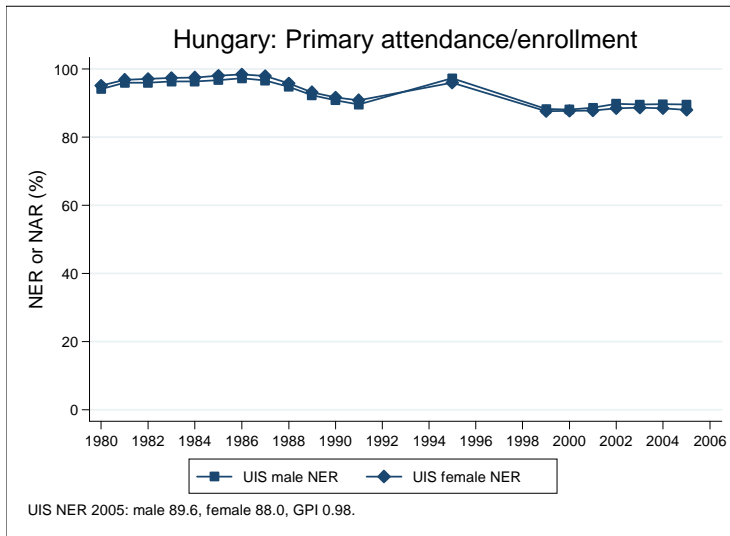
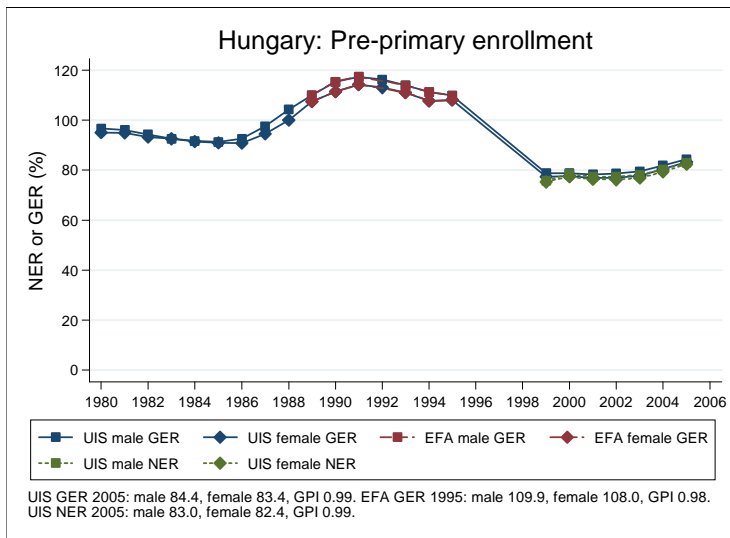
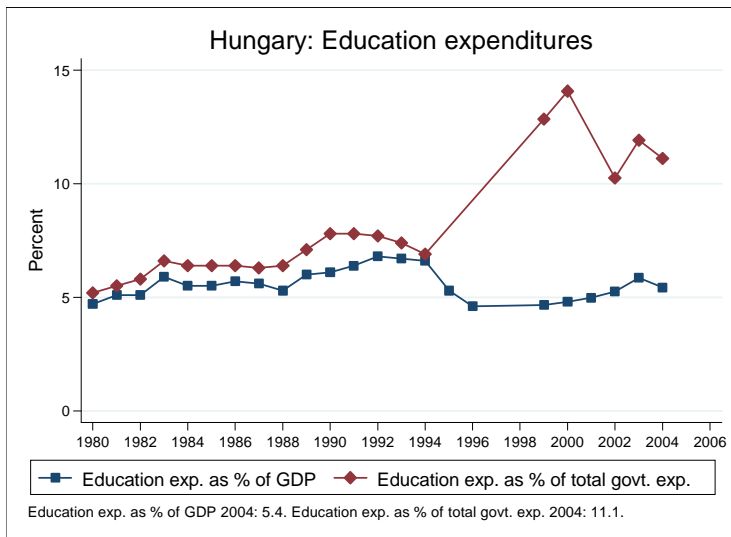
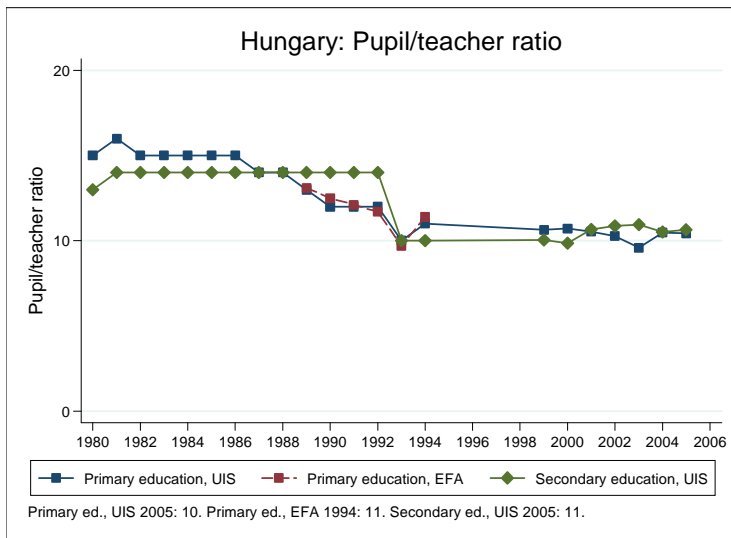
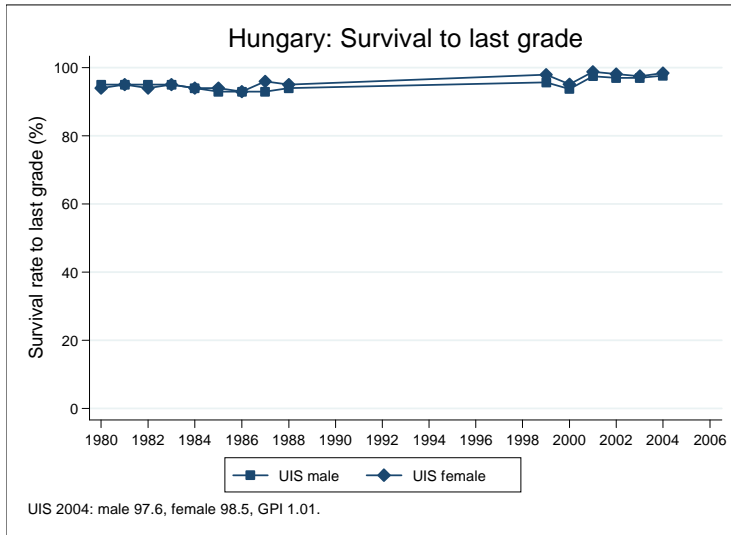


## Education statistics: Hungary

UNICEF, Division of Policy and Practice, Statistics and Monitoring Section, www.childinfo.org, May 2008





## Administrative data: UNESCO Institute for Statistics

### Hungary

<b>Population (1,000)</b>	<b>Total</b>	<b>Male</b>	<b>Female</b>
Preschool age, 2006	378	194	183
Primary school age, 2006	428	220	208
Secondary school age, 2006	994	508	485
Total population, all ages, 2007	10030	4777	5253
<b>Official school age (years)</b>	<b>Entrance age</b>	<b>Graduation age</b>	<b>Duration</b>
Preschool, 2005	3	6	4
Primary school, 2005	7	10	4
Secondary school, 2005	11	18	8
Compulsory education, 2005	7	16	10
<b>Net enrolment ratio (%)</b>	<b>Total</b>	<b>Male</b>	<b>Female</b>
Preschool NER, 2005	82.7	83.0	82.4
Primary school NER, 2005	88.8	89.6	88.0
Secondary school NER, 2005	89.9	89.9	89.9
<b>Gross enrolment ratio (%)</b>	<b>Total</b>	<b>Male</b>	<b>Female</b>
Preschool GER, 2005	83.9	84.4	83.4
Primary school GER, 2005	97.6	98.4	96.7
Secondary school GER, 2005	96.2	96.5	95.8
<b>Entrance and transition (%)</b>	<b>Total</b>	<b>Male</b>	<b>Female</b>
Primary net intake rate, 2005	64.7	66.5	62.8
Primary gross intake rate, 2005	96.1	97.0	95.1
Primary entrants with ECCE			
Transition rate primary-secondary, 2004	99.0	98.8	99.2
<b>Repetition and completion</b>	<b>Total</b>	<b>Male</b>	<b>Female</b>
Primary repetition rate (%), 2005	2.1	2.5	1.7
Secondary repetition rate (%), 2005	2.6	3.3	1.9
Survival rate to grade 5 (%), 1991	97.6	77.2	97.5
Survival rate to last primary grade (%), 2004	98.0	97.6	98.5
Primary completion rate (%), 2005	93.9	94.2	93.6
School life expectancy (years), 2005	11.6	11.7	11.6
<b>Teaching staff</b>	<b>Pupil/teacher ratio</b>	<b>% trained teachers</b>	<b>% female teachers</b>
Preschool, 2005	10.6		99.7
Primary school, 2005	10.4		95.9
Secondary school, 2005	10.6		71.5
<b>Public expenditure per student as % of GDP per capita</b>			
Primary school, 2004	23.3		
Secondary school, 2004	23.5		
<b>Total public expenditure on education</b>			
As % of GDP, 2004	5.4		
As % of total government expenditure, 2004	11.1		

#### Data sources:

*Population:* United Nations Population Division, *World Population Prospects: The 2006 Revision*, March 2007.

*Education:* UNESCO Institute for Statistics, Data Centre, <http://stats.uis.unesco.org/unesco/ReportFolders/ReportFolders.aspx>, January 2008.