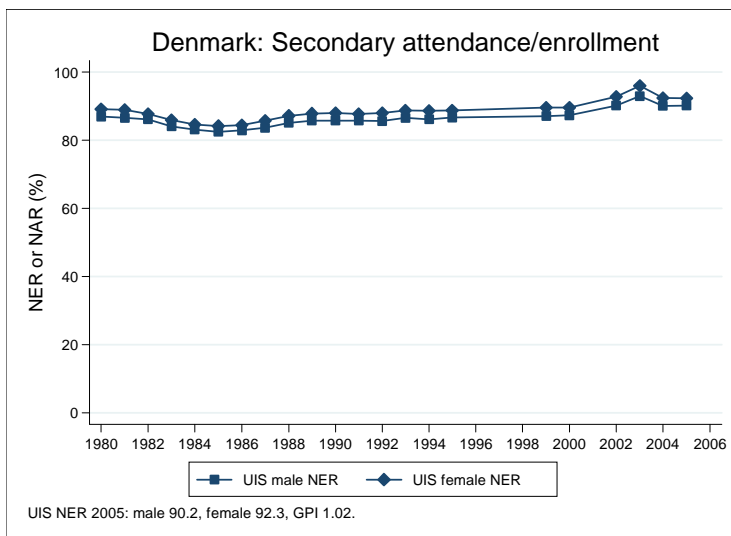
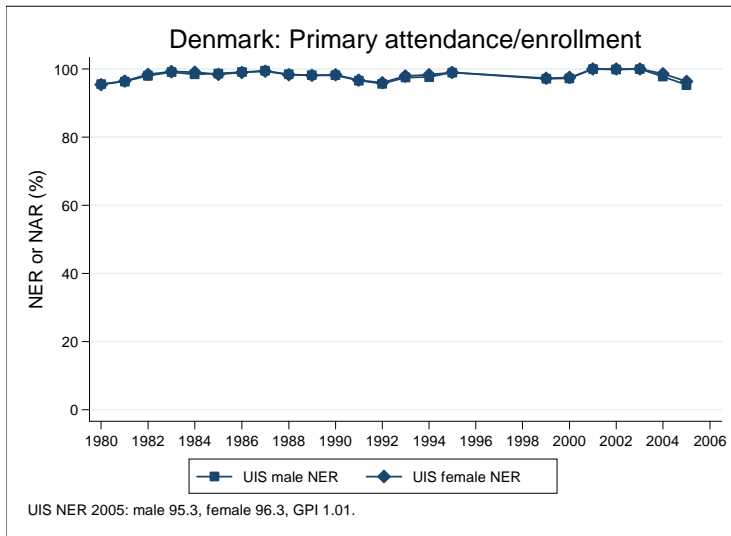
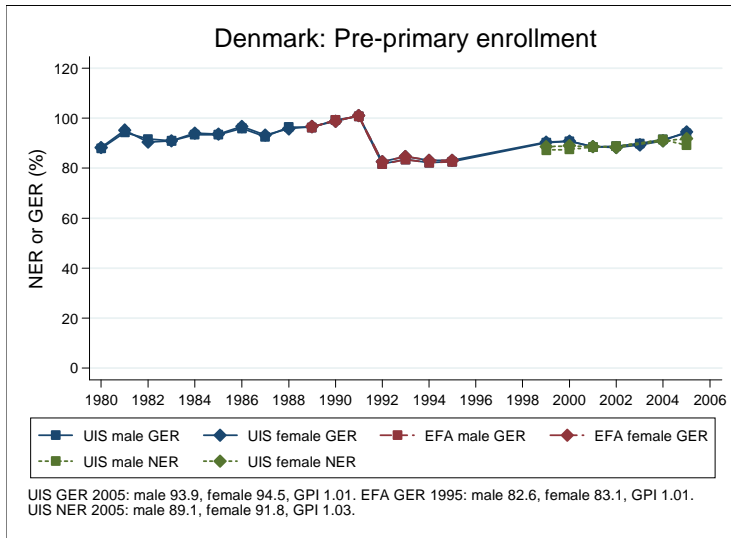
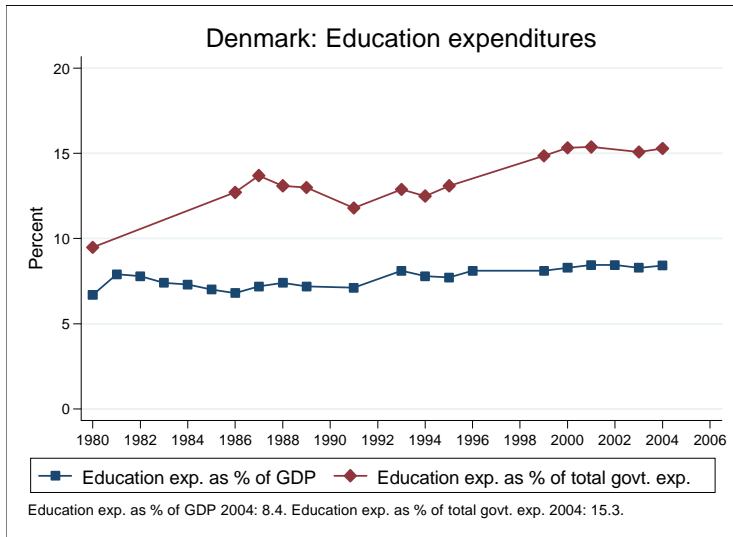
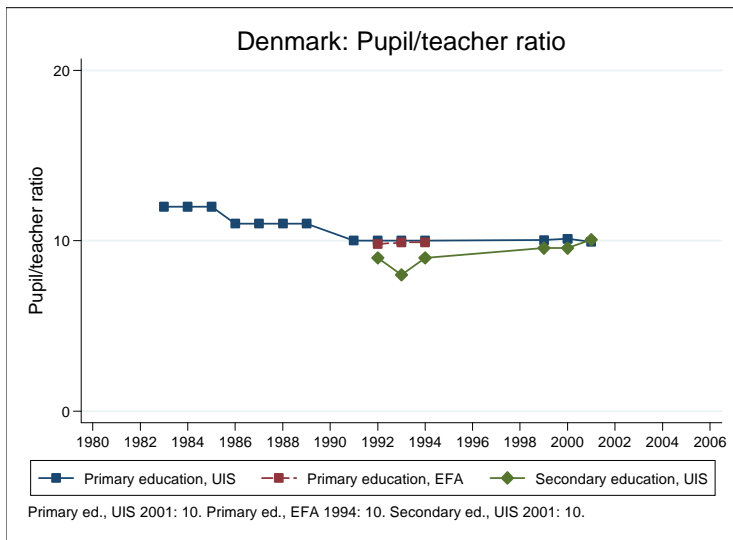
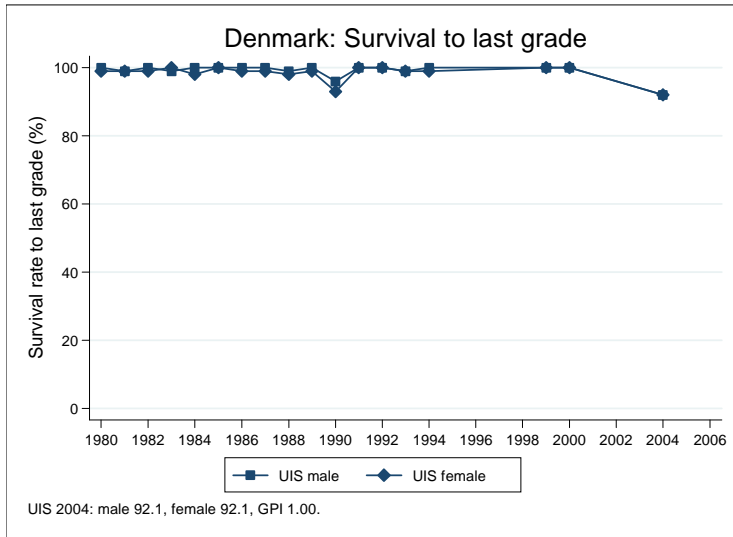


## Education statistics: Denmark

UNICEF, Division of Policy and Practice, Statistics and Monitoring Section, www.childinfo.org, May 2008





## Administrative data: UNESCO Institute for Statistics

### Denmark

<b>Population (1,000)</b>	<b>Total</b>	<b>Male</b>	<b>Female</b>
Preschool age, 2006	265	136	129
Primary school age, 2006	421	216	205
Secondary school age, 2006	388	199	189
Total population, all ages, 2007	5442	2695	2748
<b>Official school age (years)</b>	<b>Entrance age</b>	<b>Graduation age</b>	<b>Duration</b>
Preschool, 2005	3	6	4
Primary school, 2005	7	12	6
Secondary school, 2005	13	18	6
Compulsory education, 2005	7	16	10
<b>Net enrolment ratio (%)</b>	<b>Total</b>	<b>Male</b>	<b>Female</b>
Preschool NER, 2005	90.4	89.1	91.8
Primary school NER, 2005	95.8	95.3	96.3
Secondary school NER, 2005	91.2	90.2	92.3
<b>Gross enrolment ratio (%)</b>	<b>Total</b>	<b>Male</b>	<b>Female</b>
Preschool GER, 2005	94.2	93.9	94.5
Primary school GER, 2005	98.9	99.0	98.8
Secondary school GER, 2005	123.6	121.8	125.5
<b>Entrance and transition (%)</b>	<b>Total</b>	<b>Male</b>	<b>Female</b>
Primary net intake rate, 2005	73.0	69.3	76.8
Primary gross intake rate, 2005	97.4	97.6	97.2
Primary entrants with ECCE			
Transition rate primary-secondary, 2004	99.7	100.0	99.4
<b>Repetition and completion</b>	<b>Total</b>	<b>Male</b>	<b>Female</b>
Primary repetition rate (%)			
Secondary repetition rate (%), 2005	0.7	0.8	0.6
Survival rate to grade 5 (%), 2004	93.3	93.4	93.2
Survival rate to last primary grade (%), 2004	92.1	92.1	92.1
Primary completion rate (%), 2005	99.1	99.1	99.0
School life expectancy (years), 2005	13.4	13.4	13.5
<b>Teaching staff</b>	<b>Pupil/teacher ratio</b>	<b>% trained teachers</b>	<b>% female teachers</b>
Preschool, 2001	5.5		92.0
Primary school, 2001	9.9		64.0
Secondary school, 2001	10.1		48.1
<b>Public expenditure per student as % of GDP per capita</b>			
Primary school, 2004	24.8		
Secondary school, 2004	35.3		
<b>Total public expenditure on education</b>			
As % of GDP, 2004	8.4		
As % of total government expenditure, 2004	15.3		

#### Data sources:

*Population:* United Nations Population Division, *World Population Prospects: The 2006 Revision*, March 2007.

*Education:* UNESCO Institute for Statistics, Data Centre, <http://stats.uis.unesco.org/unesco/ReportFolders/ReportFolders.aspx>, January 2008.